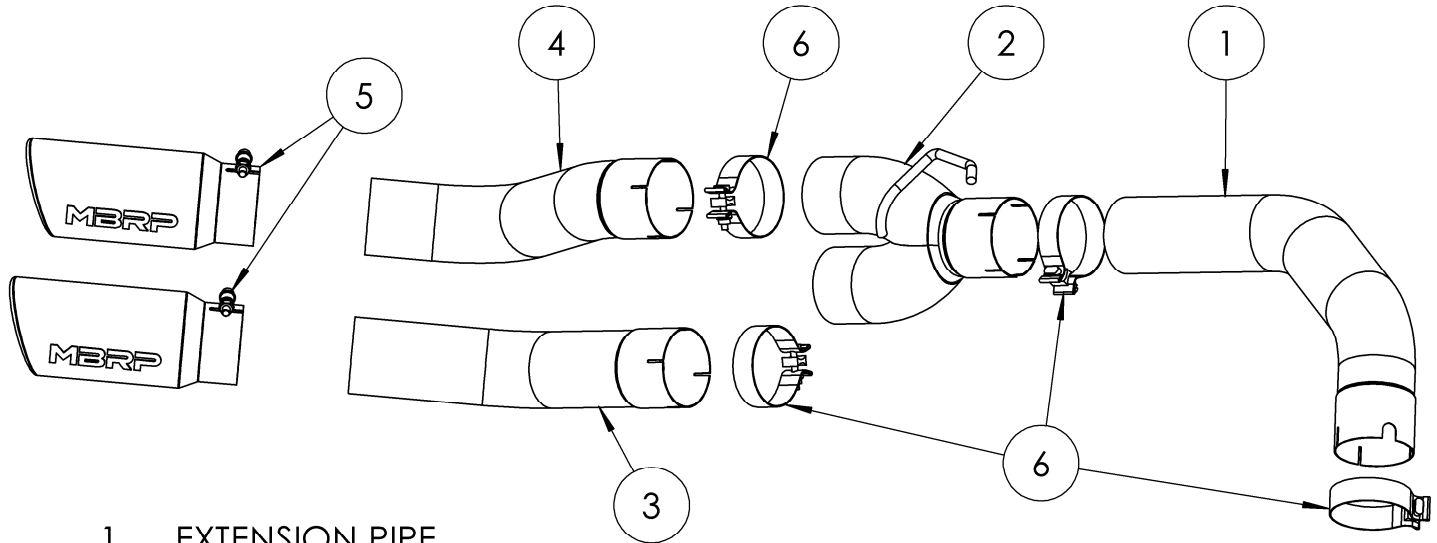


S6166

2013-2018 RAM 2500/3500 ALL EXCEPT
CREW CAB SHORT BOX
2019-UP RAM 2500/3500 ALL
6.7L CUMMINS, DPF BACK, 4" DUAL OUTLET
SINGE SIDE

MBRP



1. EXTENSION PIPE
2. Y-PIPE
3. FRONT TAIL PIPE
4. REAR TAIL PIPE
5. EXHAUST TIP (2 PCS)
6. 4" CLAMP (4 PCS)

NOTE: - NOT RECOMMENDED FOR VEHICLES EQUIPPED WITH AIR SUSPENSION

**- 2019 AND NEWER MODELS MAY REQUIRE ADDITIONAL ADJUSTMENT
OR MODIFICATION OF THE SPARE TIRE HEAT SHIELD**

PLEASE READ BEFORE STARTING INSTALLATION

While MBRP Inc. has made every effort to ensure that all components of this system are of superior quality and properly packaged, it is the installer's responsibility to ensure the following before removal of the factory exhaust:

- that ALL components shown above are present.
- that ALL mating components fit together.
- that there are no damaged components.
- that the system you have purchased is appropriate for your vehicle year, model and configuration.
- that the system will not interfere with any modifications previously installed or planned.
- that you have read and understand these instructions.

If you have any questions or are uncertain about any aspect of the installation of this system to your vehicle please contact your dealer before commencing installation.

MBRP

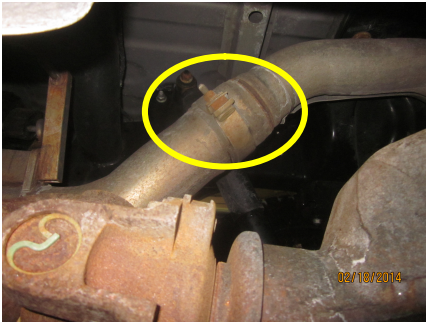


Figure 1

Removal of Stock System:

1. Apply a penetrating lubricant liberally to all exhaust fasteners, hangers and rubber insulators.
2. Loosen the nut on the clamp on the factory tailpipe.
Refer to Figure 1.
3. Remove the tail pipe from the extension pipe and then from the factory rubber insulator. Remove the stock tail pipe from the vehicle.
Refer to Figure 2.



Figure 2

Installation of MBRP Performance Exhaust:

1. Start the **Y-Pipe** hanger into the OEM rubber insulator.
Refer to Figure 3.
2. Install the **Extension Pipe** into the **Y-Pipe**. Place two **4" Clamps** over the **Extension Pipe** ensuring they will be able to be tightened. Do not tighten any clamps until all parts are installed and aligned.
3. Install the **Extension Pipe** onto the factory extension pipe. This may take forcing the **Y-Pipe** towards the rear of the truck almost until it comes out of the OEM rubber insulator.
Refer to Figure 4.



Figure 3



Figure 4

MBRP



Figure 5

4. Place one **4” Clamp** over the **Rear Tail Pipe** and install onto the upper branch of the **Y-Pipe**.
Refer to Figure 5.



Figure 6

5. Place one **4” Clamp** over the **Front Tail Pipe** and install onto the lower branch of the **Y-Pipe**.
Refer to Figure 6.

6. Align the **Front Tail Pipe** and the **Rear Tail Pipe** with each other and adjust the **Y-Pipe** and **Extension Pipe** to maximize clearance around the suspension components and spare tire heat shield. Snug, but don't completely tighten all connection points. 2019 and newer models may require bending the spare tire heat shield to gain sufficient clearance.

7. Install the **Exhaust Tips** and adjust to your liking. The **Exhaust Tips** can only be installed on the straight section of the **Tail Pipes**. Attempting to force them back farther may not allow them to tighten and align properly.
Refer to Figures 7 and 8.



Figure 7

8. Once everything is aligned completely tighten all **Clamps**.

9. Check along the whole length of the exhaust system to ensure that there is adequate clearance around the spare tire, fuel and brake lines or any wiring. If any interference is detected relocate or adjust.

10. It is highly recommended to tack weld each joint, including the **Exhaust Tips** to ensure vibrations do not allow any pieces to become detached. If you do not have access to a welder, a visit to your local muffler shop is advised.



Figure 8



Congratulations! You are ready to begin experiencing the improved power, sound and driving experience of your **MBRP** performance exhaust system. We hope you enjoy your purchase.